

CHERIE  
BERGER  
TEAM

November 2025

# Martinsville Market Insights

NOVEMBER 2025

# Martinsville

NOVEMBER 2025

## Market Profile & Trends Overview

The table belows shows data & statistics for November 2025 (CM), and the percentage difference of these metrics compared to data from last month (LM), the last three months (L3M), the same month last year (PYM), the entire last year (LY), prior year (PY), year-to-date (YTD), and the prior year-to-date (PYTD).

		CM	LM	L3M	PYM	LY	PY	YTD	PYTD
Inventory	# OF PROPERTIES	5	-37%	-55%	-17%	-43%	-44%	-	-
	MEDIAN PRICE	\$714,900	1%	-12%	-53%	-34%	-39%	-	-
	AVERAGE PRICE	\$1,085,780	14%	5%	-28%	-9%	0%	-	-
	PRICE PER SQFT	\$334	12%	13%	-7%	22%	-18%	-	-
	MONTHS OF SUPPLY	1.3	-37%	-69%	-17%	85%	-41%	-	-
New Listings	# OF PROPERTIES	3	-57%	-25%	200%	-43%	-22%	58	38.1%
	MEDIAN PRICE	\$1,625,000	139%	115%	48%	78%	127%	\$810,000	21.4%
	AVERAGE PRICE	\$1,379,667	58%	66%	25%	34%	71%	\$1,019,262	27.3%
	PRICE PER SQFT	\$396	0%	278%	0%	80%	85%	\$332	16.1%
Sales	# OF PROPERTIES	4	0%	33%	0%	2%	30%	39	14.7%
	MEDIAN PRICE	\$780,000	-7%	-15%	8%	-3%	38%	\$875,000	27.9%
	AVERAGE PRICE	\$942,500	11%	-1%	34%	10%	44%	\$1,004,177	23.9%
	PRICE PER SQFT	\$0	0%	0%	0%	0%	0%	\$337	10.9%
	SALE-TO-LIST RATIO	101.8%	-0.5%	-1%	-2.9%	-1.8%	15.1%	101.7%	-2.4%

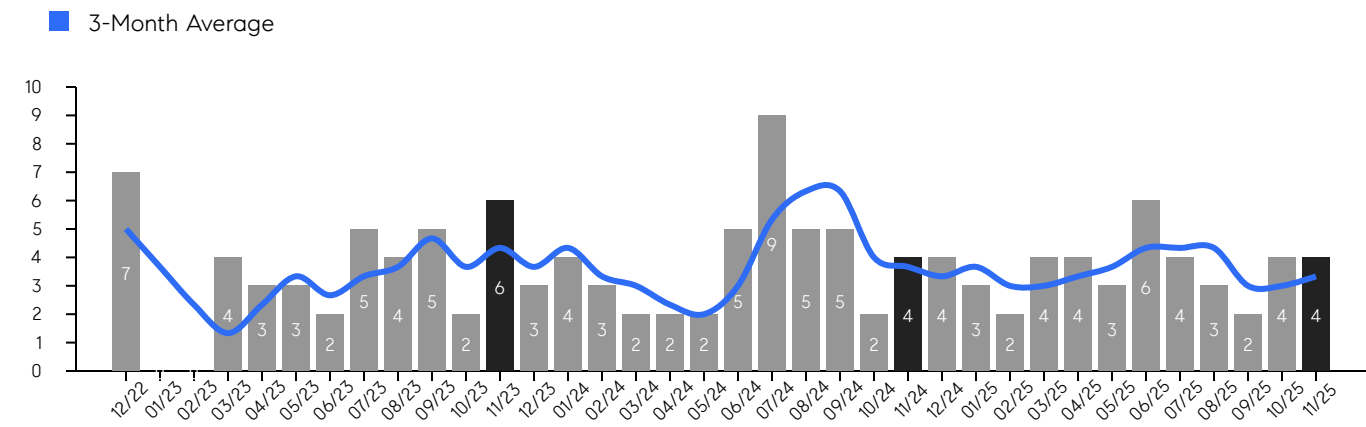
© 2025. Based on information from Garden State MLS, LLC for the period of January 2018 through November 2025. Due to MLS reporting methods and allowable reporting policy, this data is only informational and may not be completely accurate. Data maintained by the MLS may not reflect all real estate activity in the market.

# Martinsville

NOVEMBER 2025

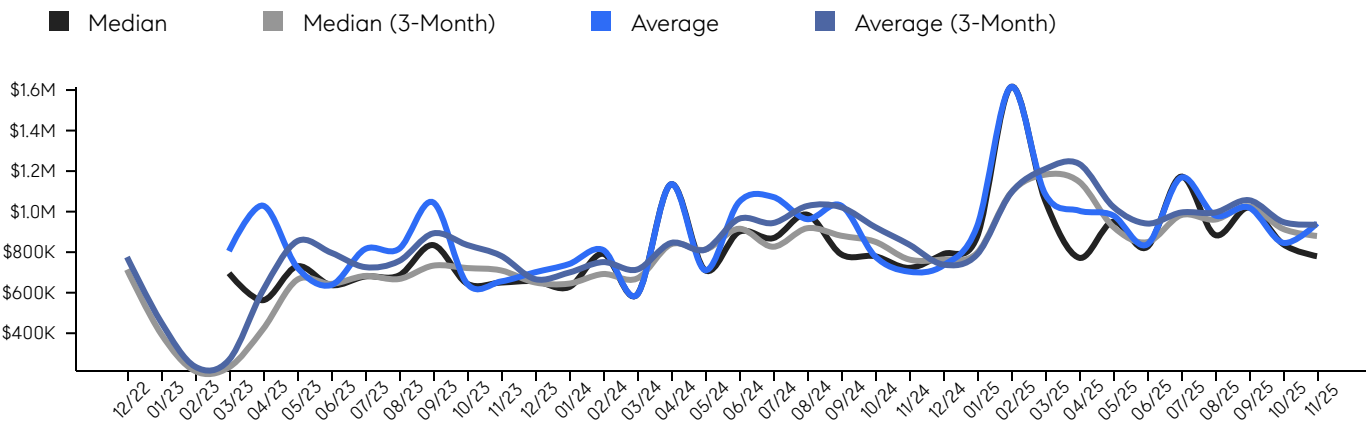
## Property Sales

There were 4 sales in November 2025, a change of 0% from 4 in November 2024 and 0% from the 4 sales last month. Compared to November 2023 and 2024, sales were at a similar level. There have been 39 year-to-date (YTD) sales, which is 14.7% higher than last year's year-to-date sales of 34.



## Property Prices

The median sales price in November 2025 was \$780,000, a change of 8% from \$722,500 in November 2024, and a change of -7% from \$840,000 last month. The average sales price in November 2025 was \$942,500, a change of 34% from \$703,750 in November 2024, and a change of 11% from \$846,250 last month, and was at its highest level compared to 2024 and 2023.



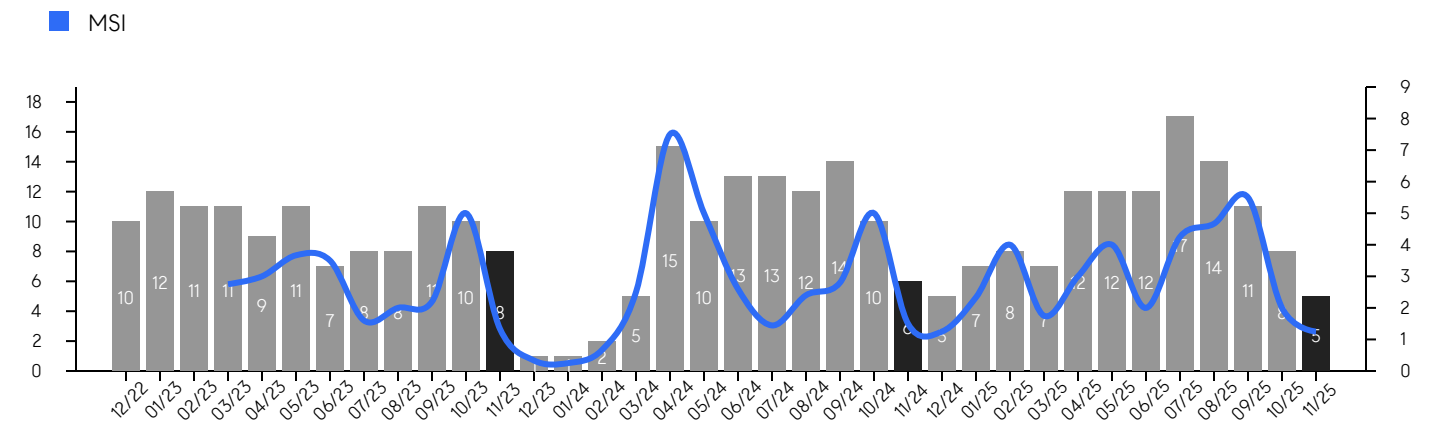
© 2025. Based on information from Garden State MLS, LLC for the period of January 2018 through November 2025. Due to MLS reporting methods and allowable reporting policy, this data is only informational and may not be completely accurate. Data maintained by the MLS may not reflect all real estate activity in the market.

# Martinsville

NOVEMBER 2025

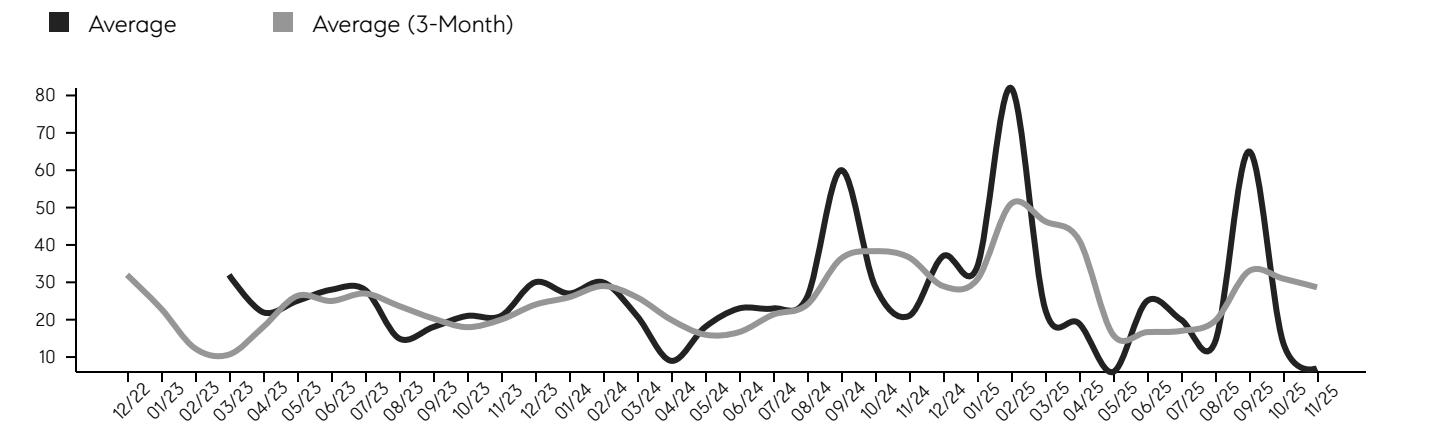
## Inventory & MSI

The total inventory of properties available for sale as of November 2025 was 5, a difference of -37% from - last month, and -17% from 6 in November 2024, and was at its lowest level compared to 2024 and 2023. The months of supply inventory (MSI) was at 1.3 months, a similar level compared to 2024 and 2023. A comparatively lower MSI benefits sellers, while a higher MSI benefits buyers.



## Market Time

The average days on market (DOM) shows the number of days the average property is on the market before selling. An upward trend tends to indicate a move towards a buyer's market, while a downward trend tends to indicate a move to a seller's market. The DOM for November 2025 was 7, a change of -50% from 14 days last month, and -67% from 21 days in November 2024, and was mid level compared to 2024 and 2023.



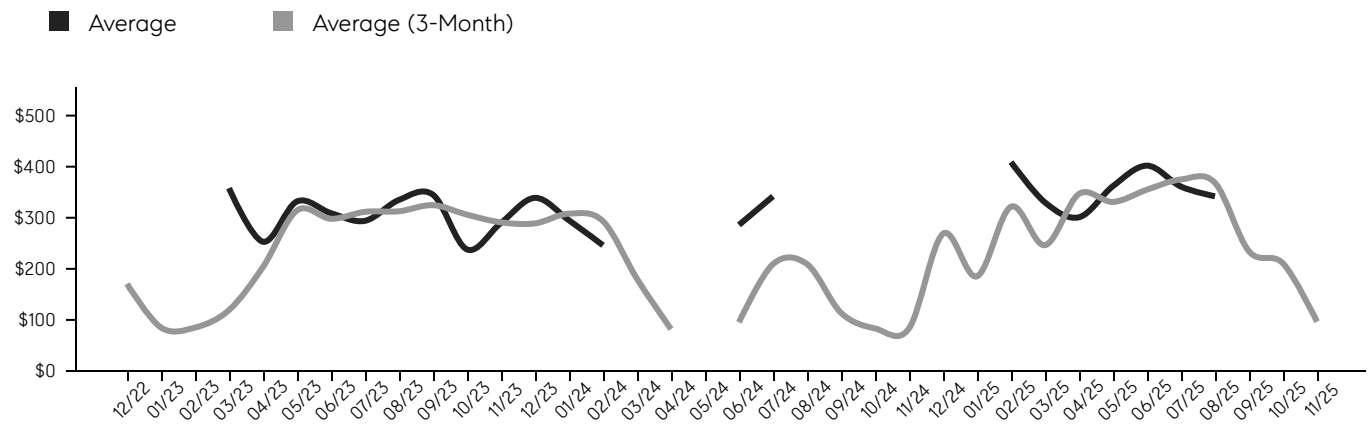
© 2025. Based on information from Garden State MLS, LLC for the period of January 2018 through November 2025. Due to MLS reporting methods and allowable reporting policy, this data is only informational and may not be completely accurate. Data maintained by the MLS may not reflect all real estate activity in the market.

# Martinsville

NOVEMBER 2025

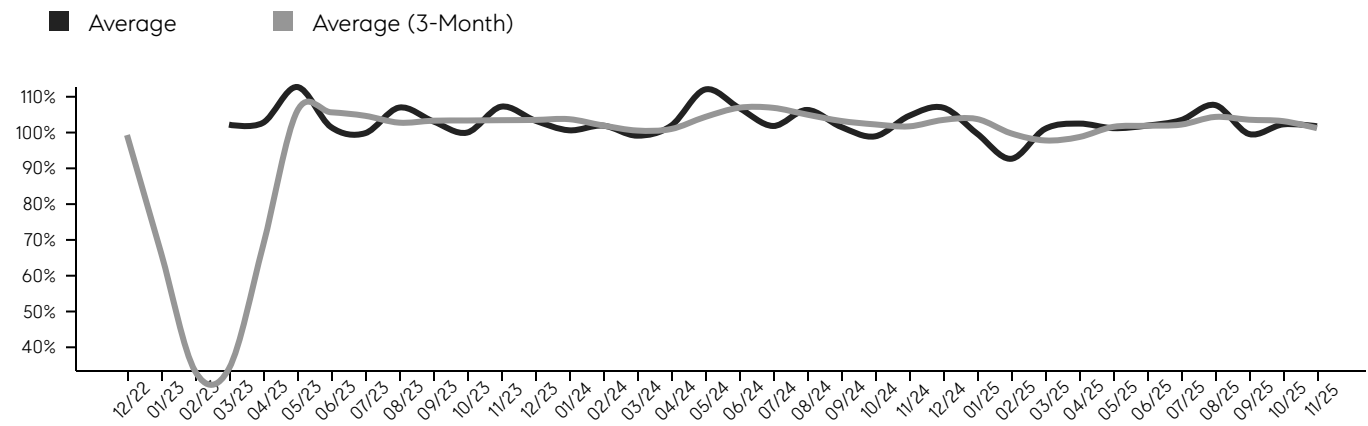
## Selling Price Per Square Foot

The selling price per square foot (PPSF) is a great indicator for the direction of property values. Since median & average sales prices can be impacted by the "mix" of high or low end properties in the market, the selling price per square foot is a more normalized indicator on the direction of property values.



## Selling Price vs. Listing Price

The selling price vs. listing price reveals the average amount that sellers are agreeing to come down from their list price. The lower the ratio is below 100%, the more of a buyer's market exists, while a ratio at or above 100% indicates more of a seller's market. The November 2025 selling price vs. listing price ratio was 101.8%, compared to 102.3% last month, and 104.7% in November 2024.



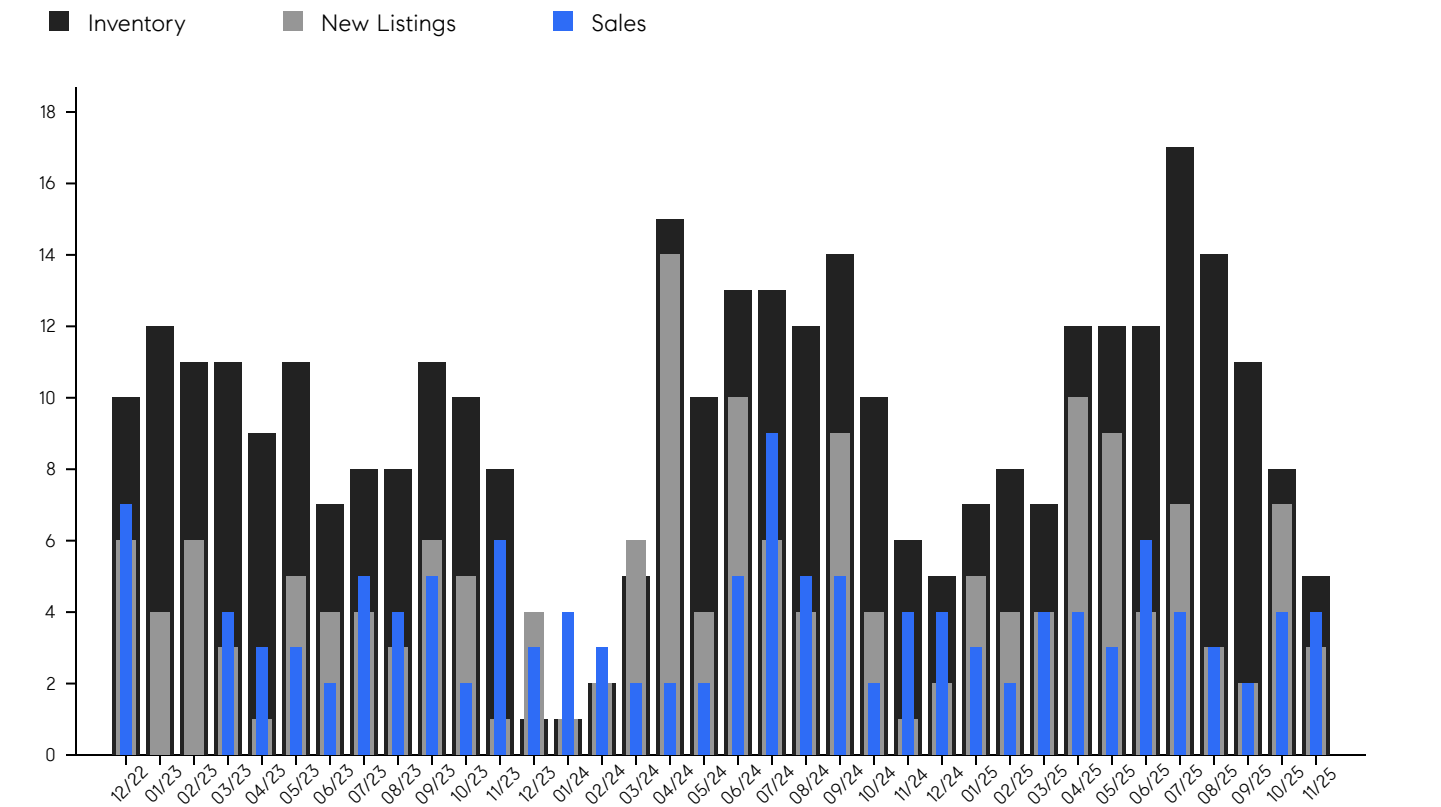
© 2025. Based on information from Garden State MLS, LLC for the period of January 2018 through November 2025. Due to MLS reporting methods and allowable reporting policy, this data is only informational and may not be completely accurate. Data maintained by the MLS may not reflect all real estate activity in the market.

# Martinsville

NOVEMBER 2025

## Inventory, New Listings & Sales

This last view of the market combines monthly inventory of properties for sale along with new listings and sales. The graph shows the basic annual seasonality of the market, as well as the relationship between these items. The number of new listings in November 2025 was 3, a change of -57% from 7 last month and 200% from 1 in November 2024.



© 2025. Based on information from Garden State MLS, LLC for the period of January 2018 through November 2025. Due to MLS reporting methods and allowable reporting policy, this data is only informational and may not be completely accurate. Data maintained by the MLS may not reflect all real estate activity in the market.

## Martinsville

NOVEMBER 2025

MONTH	# OF SALES	3-MO AVG	MEDIAN SALE PRICE	3-MO AVG	AVERAGE SALE PRICE	3-MO AVG	DAYS ON MARKET	3-MO AVG	AVERAGE PPSF	3-MO AVG	SALE /LIST	3-MO AVG	INV	NEW LISTINGS	MSI
Nov '25	4	3	\$780K	\$880K	\$942K	\$936K	7	29	\$0	\$97	101.8%	101.2%	5	3	1.3
Oct '25	4	3	\$840K	\$915K	\$846K	\$949K	14	31	\$290	\$211	102.3%	103.2%	8	7	2.0
Sep '25	2	3	\$1.0M	\$1M	\$1.0M	\$1M	65	33	\$0	\$234	99.6%	103.6%	11	2	5.5
Aug '25	3	4	\$885K	\$961K	\$981K	\$996K	14	20	\$342	\$368	107.7%	104.4%	14	3	4.7
Jul '25	4	4	\$1.1M	\$982K	\$1.1M	\$996K	20	17	\$361	\$375	103.5%	102.2%	17	7	4.3
Jun '25	6	4	\$825K	\$849K	\$837K	\$941K	25	17	\$402	\$355	101.9%	101.9%	12	4	2.0
May '25	3	4	\$949K	\$926K	\$981K	\$1M	6	16	\$362	\$331	101.2%	101.6%	12	9	4.0
Apr '25	4	3	\$772K	\$1M	\$1.0M	\$1M	19	41	\$301	\$347	102.5%	98.7%	12	10	3.0
Mar '25	4	3	\$1.0M	\$1M	\$1.0M	\$1M	23	46	\$330	\$246	101.0%	97.8%	7	4	1.8
Feb '25	2	3	\$1.6M	\$1M	\$1.6M	\$1M	82	51	\$409	\$322	92.7%	99.8%	8	4	4.0
Jan '25	3	4	\$875K	\$796K	\$926K	\$788K	34	31	\$0	\$185	99.7%	103.8%	7	5	2.3
Dec '24	4	3	\$790K	\$764K	\$733K	\$739K	37	29	\$556	\$269	107.0%	103.5%	5	2	1.3
Nov '24	4	4	\$722K	\$764K	\$703K	\$838K	21	37	\$0	\$83	104.7%	101.7%	6	1	1.5
Oct '24	2	4	\$780K	\$852K	\$780K	\$924K	29	38	\$250	\$83	98.9%	102.3%	10	4	5.0
Sep '24	5	6	\$790K	\$881K	\$1.0M	\$1M	60	36	\$0	\$114	101.6%	103.2%	14	9	2.8
Aug '24	5	6	\$985K	\$918K	\$963K	\$1M	26	24	\$0	\$209	106.3%	105.0%	12	4	2.4
Jul '24	9	5	\$869K	\$827K	\$1.0M	\$944K	23	21	\$342	\$209	101.8%	106.9%	13	6	1.4
Jun '24	5	3	\$900K	\$916K	\$1.0M	\$965K	23	17	\$286	\$95	106.9%	106.9%	13	10	2.6
May '24	2	2	\$711K	\$812K	\$711K	\$812K	18	16	\$0	\$0	112.0%	104.3%	10	4	5.0
Apr '24	2	2	\$1.1M	\$839K	\$1.1M	\$845K	9	20	\$0	\$82	101.9%	101.0%	15	14	7.5
Mar '24	2	3	\$590K	\$670K	\$590K	\$714K	21	26	\$0	\$180	99.1%	100.6%	5	6	2.5
Feb '24	3	3	\$792K	\$692K	\$811K	\$751K	30	29	\$246	\$293	101.9%	102.0%	2	2	0.7
Jan '24	4	4	\$627K	\$645K	\$741K	\$699K	27	26	\$295	\$308	100.6%	103.7%	1	1	0.3
Dec '23	3	4	\$657K	\$651K	\$700K	\$667K	30	24	\$339	\$289	103.4%	103.5%	1	4	0.3
Nov '23	6	4	\$650K	\$710K	\$655K	\$782K	21	20	\$290	\$291	107.2%	103.5%	8	1	1.3
Oct '23	2	4	\$645K	\$722K	\$645K	\$836K	21	18	\$238	\$306	100.0%	103.4%	10	5	5.0
Sep '23	5	5	\$835K	\$733K	\$1.0M	\$892K	18	20	\$345	\$325	103.2%	103.3%	11	6	2.2
Aug '23	4	4	\$685K	\$668K	\$816K	\$756K	15	24	\$335	\$313	107.0%	102.8%	8	3	2.0
Jul '23	5	3	\$680K	\$683K	\$815K	\$726K	28	27	\$294	\$312	99.8%	104.7%	8	4	1.6
Jun '23	2	3	\$637K	\$644K	\$637K	\$798K	28	25	\$309	\$298	101.5%	105.7%	7	4	3.5
May '23	3	3	\$730K	\$663K	\$726K	\$854K	25	26	\$332	\$314	112.7%	105.9%	11	5	3.7
Apr '23	3	2	\$563K	\$420K	\$1.0M	\$611K	22	18	\$253	\$204	102.7%	68.3%	9	1	3.0
Mar '23	4	1	\$696K	\$232K	\$805K	\$268K	32	11	\$358	\$119	102.2%	34.1%	11	3	2.8
Feb '23	0	2	-	\$214K	-	\$235K	-	12	-	\$85	-	33.4%	11	6	N/A
Jan '23	0	4	-	\$398K	-	\$456K	-	23	-	\$85	-	66.5%	12	4	N/A
Dec '22	7	5	\$641K	\$714K	\$706K	\$776K	37	32	\$255	\$171	100.1%	99.3%	10	6	1.4

© 2025. Based on information from Garden State MLS, LLC for the period of January 2018 through November 2025. Due to MLS reporting methods and allowable reporting policy, this data is only informational and may not be completely accurate. Data maintained by the MLS may not reflect all real estate activity in the market.



CHERIE  
BERGER  
TEAM



**Cherie Berger**

cherie.berger@compass.com

M: 908.410.0931



**Steven Berger**

steven.berger@compass.com

M: 908.256.0307



**Ashley Berger-Freitas**

ashley.freitas@compass.com

M: 908.432.9818



**Karla Gary**

karla.gary@compass.com

M: 908.285.3813



**Josh Grundfest**

josh.grundfest@compass.com

M: 908.698.7665

Compass makes no representations or warranties, express or implied, with respect to future market conditions or prices of residential product at the time the subject property or any competitive property is complete and ready for occupancy or with respect to any report, study, finding, recommendation or other information provided by Compass herein. Moreover, no warranty, express or implied, is made or should be assumed regarding the accuracy, adequacy, completeness, legality, reliability, merchantability or fitness for a particular purpose of any information, in part or whole, contained herein. All material is presented with the understanding that Compass shall not be deemed to provide legal, accounting or other professional services. This is not intended to solicit the purchase or sale of any property. Any and all such warranties are hereby expressly disclaimed. Equal Housing Opportunity.

© Compass. All Rights Reserved. This information may not be copied, used or distributed without Compass' consent.